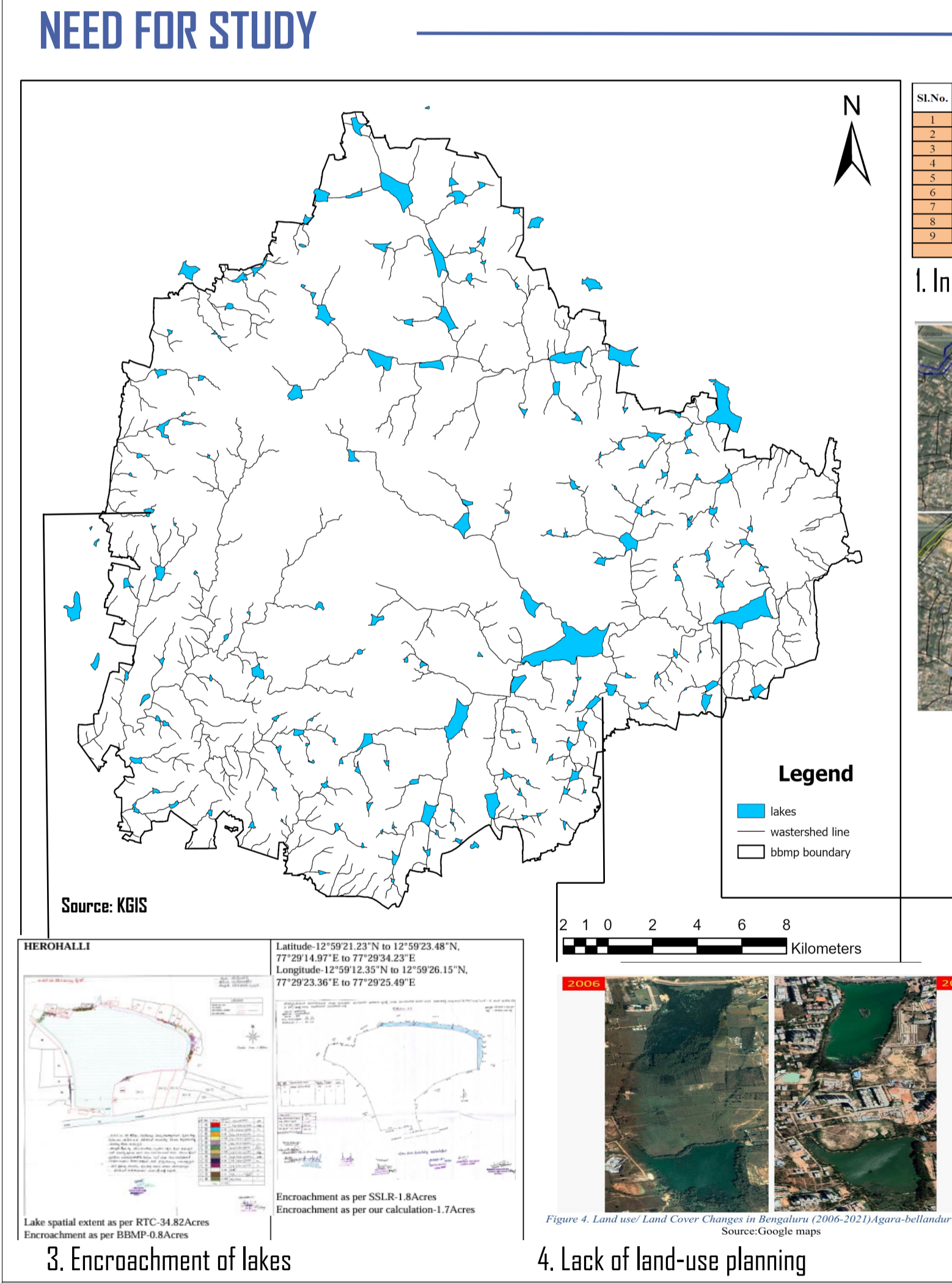
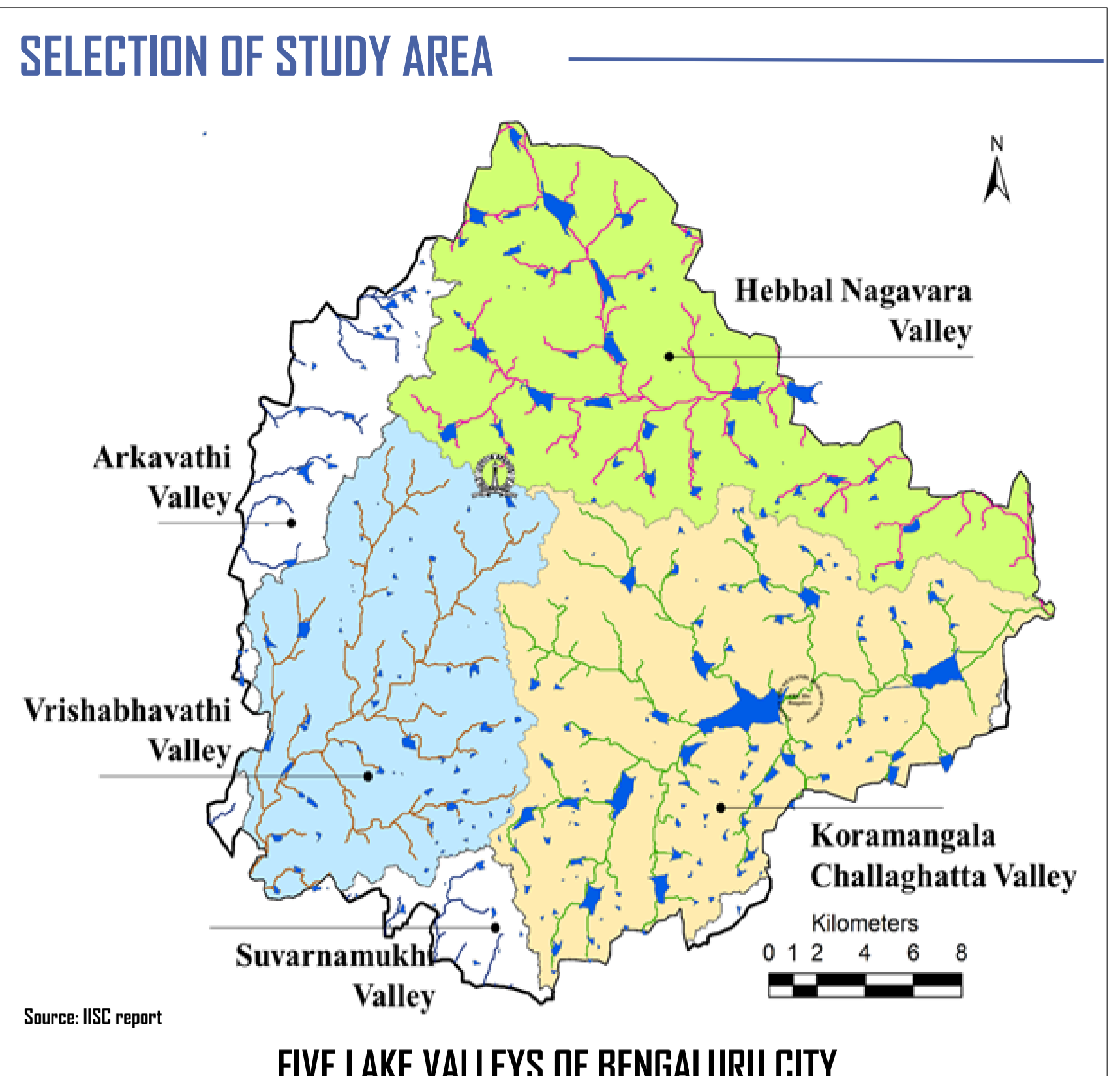
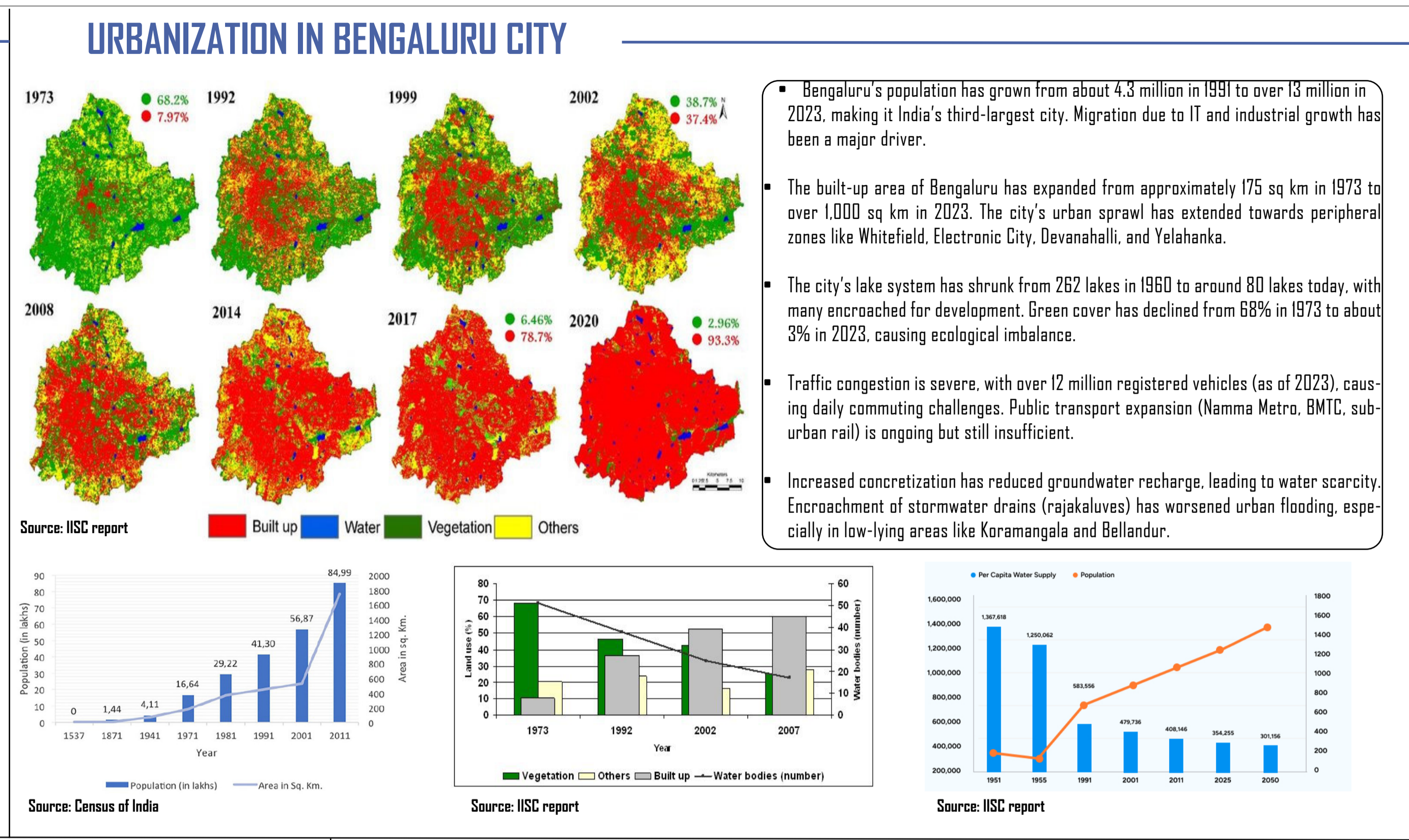


Bengaluru, the capital of Karnataka is the third largest city and the fifth largest metropolitan area in India with an estimated population of 13 mn. The city has witnessed massive growth in the last two decades led by development and expansion of the Information Technology (IT) corridors, Biotechnology, education and research institutes and industrial developments. These sectors have been generating vast employment opportunities; Bengaluru comprises 18% of all the jobs created in India.

Owing to its robust employment generation and its multiplier effect on the economy, Bengaluru contributes over 36% to the Karnataka states' Gross Domestic Product (GDP), in addition to driving the state's per capita income higher than the national average. To accommodate the population influx and the economic growth, the local planning area (LPA) of Bengaluru Development Authority (BDA) is spread over an area of 1219.5 sq km.

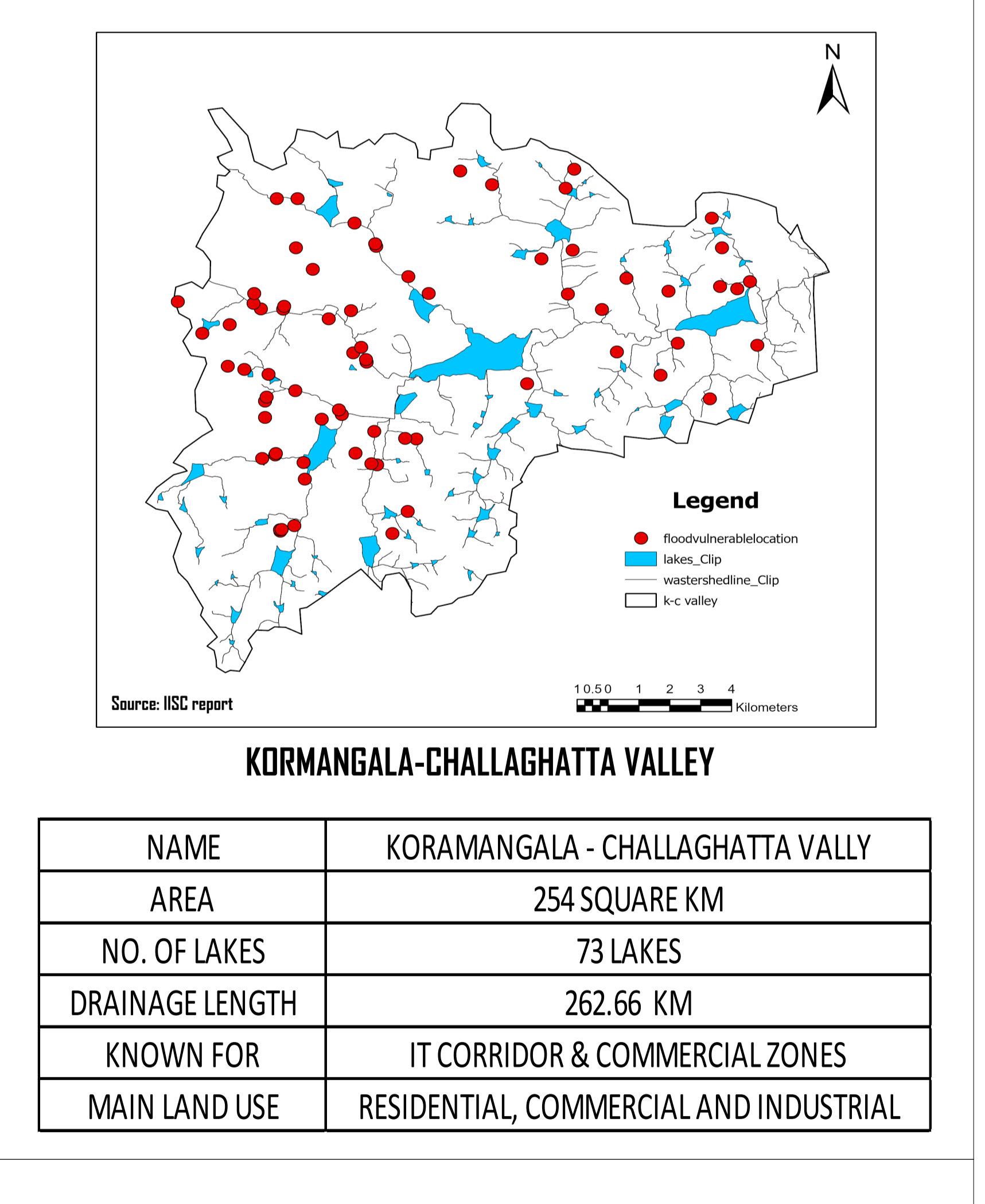
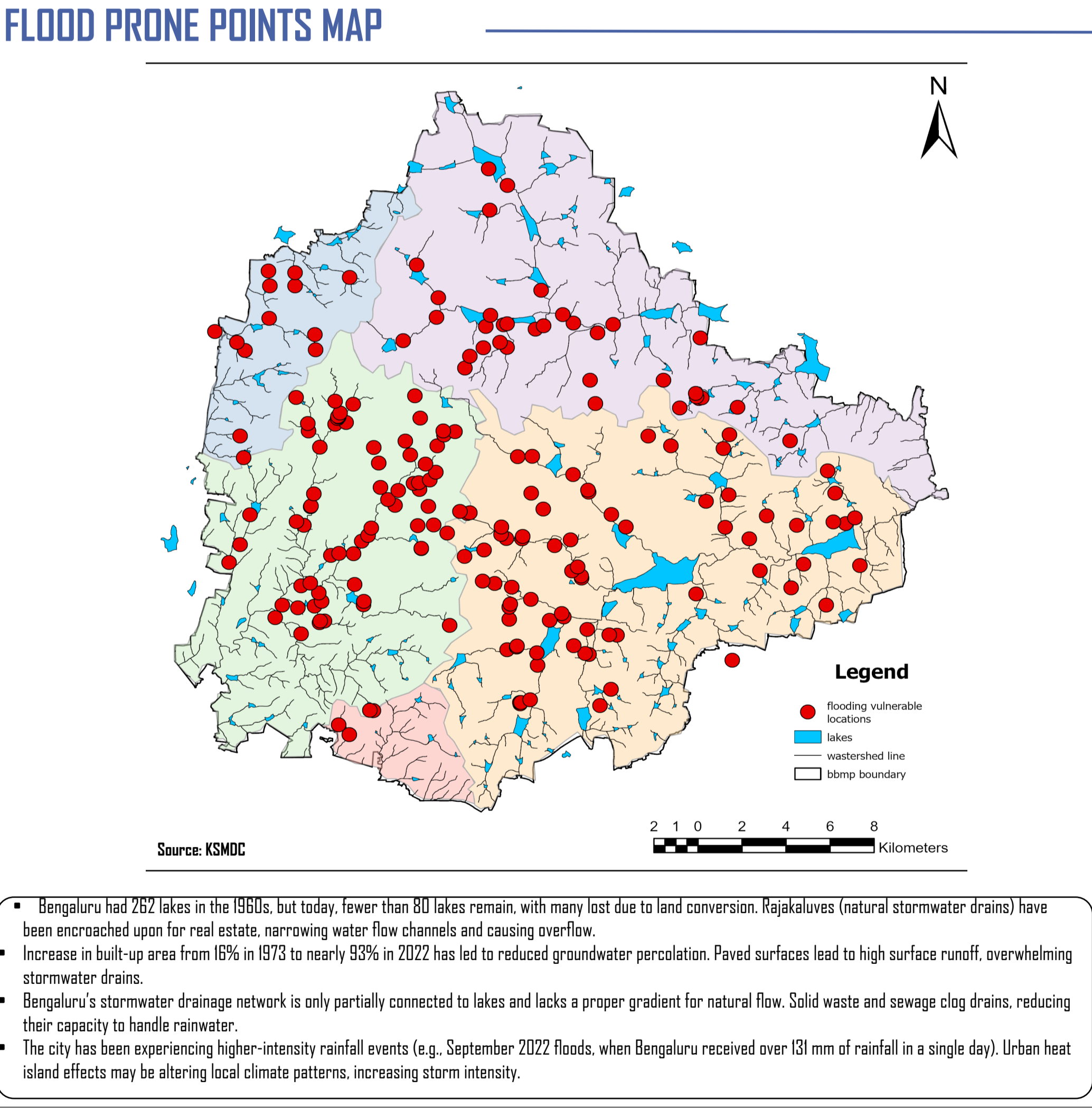
The Bruhat Bengaluru Mahanagara Palike (BBMP) boundary represents the administrative jurisdiction of Bengaluru's municipal corporation. BBMP governs the city's urban planning, infrastructure, and civic services. The boundary defines the extent of municipal responsibilities, including waste management, road networks, stormwater drains (rajakaluves), and urban development.



Sl.No.	Name of the Division	Severely Vulnerable Places	Moderately Vulnerable Places	Total Nos.
1	SWD East	5	15	20
2	SWD West	5	33	38
3	SWD South	3	7	10
4	KV Valley	10	19	29
5	Yelahanka	4	7	11
6	Mahadevapura	11	21	32
7	Bommasahalli	12	7	19
8	RR Nagar	8	31	39
9	Dasarahalli	0	15	15
Total		58	153	211

1. Increasing number of urban floods

2. Encroachment of drainage



MITIGATING URBAN FLOODS : A PLANNING STUDY ON CONNECTING BLUE-GREEN NETWORK IN KORAMANGALLA - CHALLAGHATTA VALLEY IN BENGALURU CITY