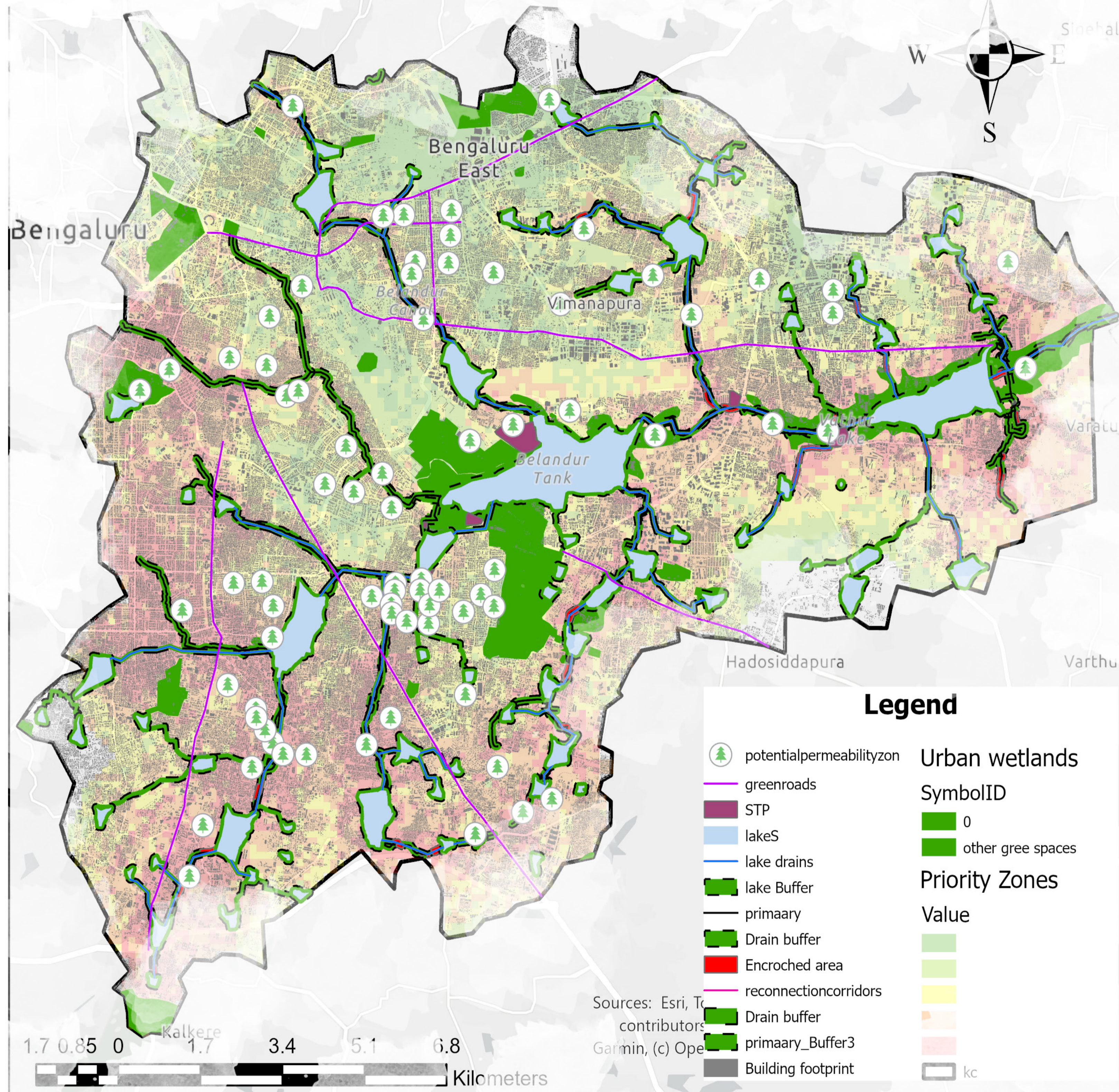


COMPREHENSIVE BLUE - GREEN NETWORK PROPOSALS

"The path forward lies not in controlling water, but in making space for it – through ecological restoration, integrated planning, and people-centric design." - Kongjian Yu and Henk Ovink



Retention ponds and rain gardens



LAKE REDEVELOPMENT PLANS



RAJAKALUVE PROTECTION AND DEVELOPMENT



PROTECTION OF WETLAND AND IT'S BIODIVERSITY



GREEN CORRIDORS TO REDUCE THE WATER CLOGGING

PHASING OF THE PROPOSALS

2025-27 | 2028-30 | 2031-35

PHASE 1: FOUNDATION

- Mapping & Pilot Interventions
- Buffer Zone Creation
- Stakeholder Taskforce
- Awareness Campaigns

PHASE 2 CONSOLIDATION

- Restoration of Rajakaluves
- Lake Interlinking
- Protocol Manual
- Sponge Pocket Expansion

PHASE 3 INTEGRATION & SCALING

- Blue-Green Corridors
- Sponge Certification
- Regulatory Embedding
- Community Water Networks



1 NO POVERTY	2 ZERO HUNGER	3 GOOD HEALTH AND WELL-BEING	4 QUALITY EDUCATION	5 GENDER EQUALITY	6 CLEAN WATER AND SANITATION
7 AFFORDABLE AND CLEAN ENERGY	8 DECENT WORK AND ECONOMIC GROWTH	9 INDUSTRY, INNOVATION AND INFRASTRUCTURE	10 REDUCED INEQUALITIES	11 SUSTAINABLE CITIES AND COMMUNITIES	12 RESPONSIBLE CONSUMPTION AND PRODUCTION
13 CLIMATE ACTION	14 LIFE BELOW WATER	15 LIFE ON LAND	16 PEACE, JUSTICE AND STRONG INSTITUTIONS	17 PARTNERSHIPS FOR THE GOALS	SUSTAINABLE DEVELOPMENT GOALS

SCHOOL OF PLANNING AND ARCHITECTURE

NAME: P.A.CHARAN

REV / EXAM NO: U01ZZ21S0029

CLASS:

DRAWING NO:15

MITIGATING URBAN FLOODS : A PLANNING STUDY ON CONNECTING BLUE-GREEN NETWORK IN KORAMANGALLA - CHALLAGHATTA VALLEY IN BENGALURU CITY